

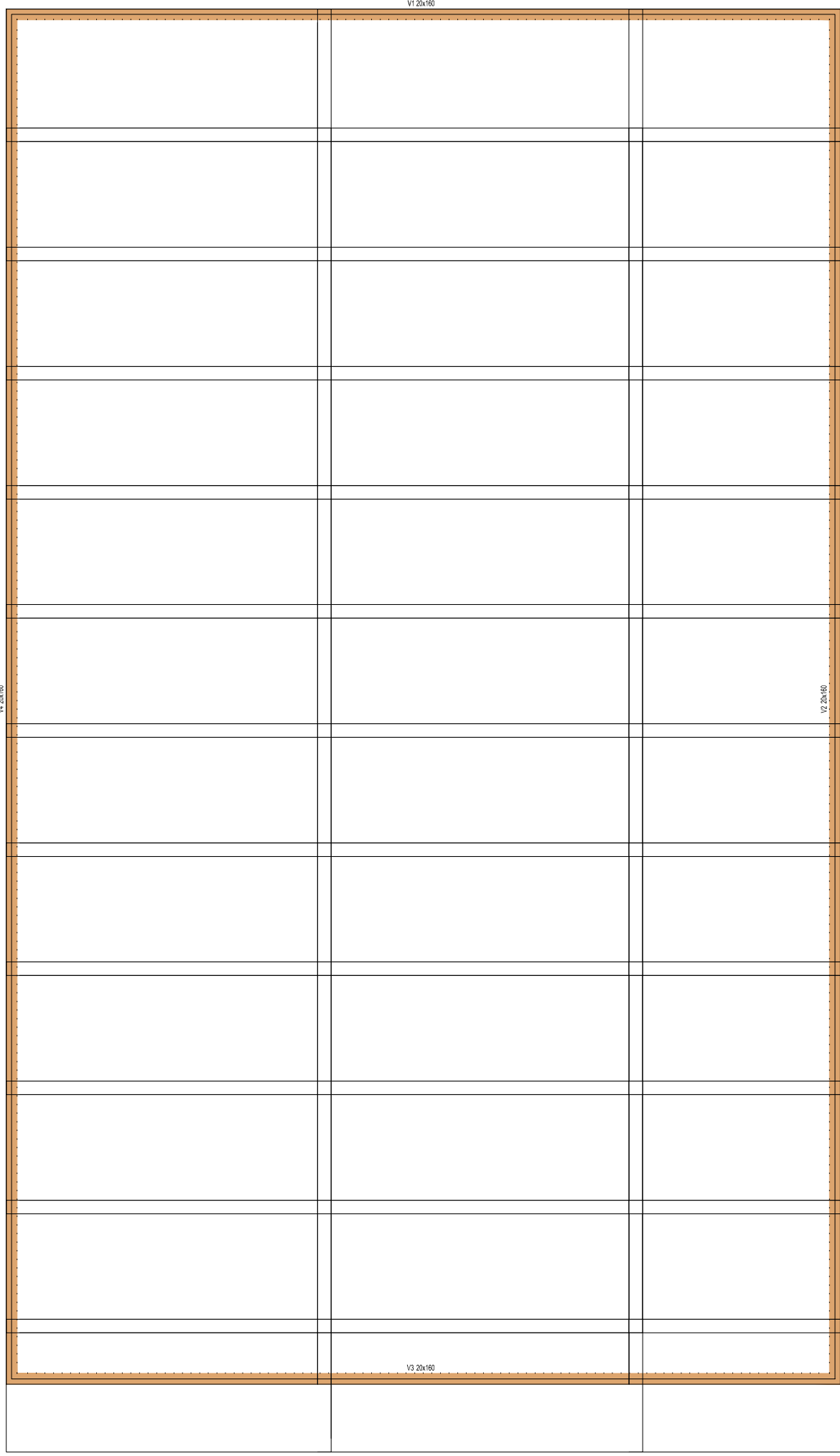
Forma do pavimento 1  
escala 1:100

Vigas			
Nome	Seção (cm)	Elevação (cm)	Nível (cm)
V1	30x160	0	0
V2	20x160	0	0
V3	20x160	0	0
V4	20x160	0	0

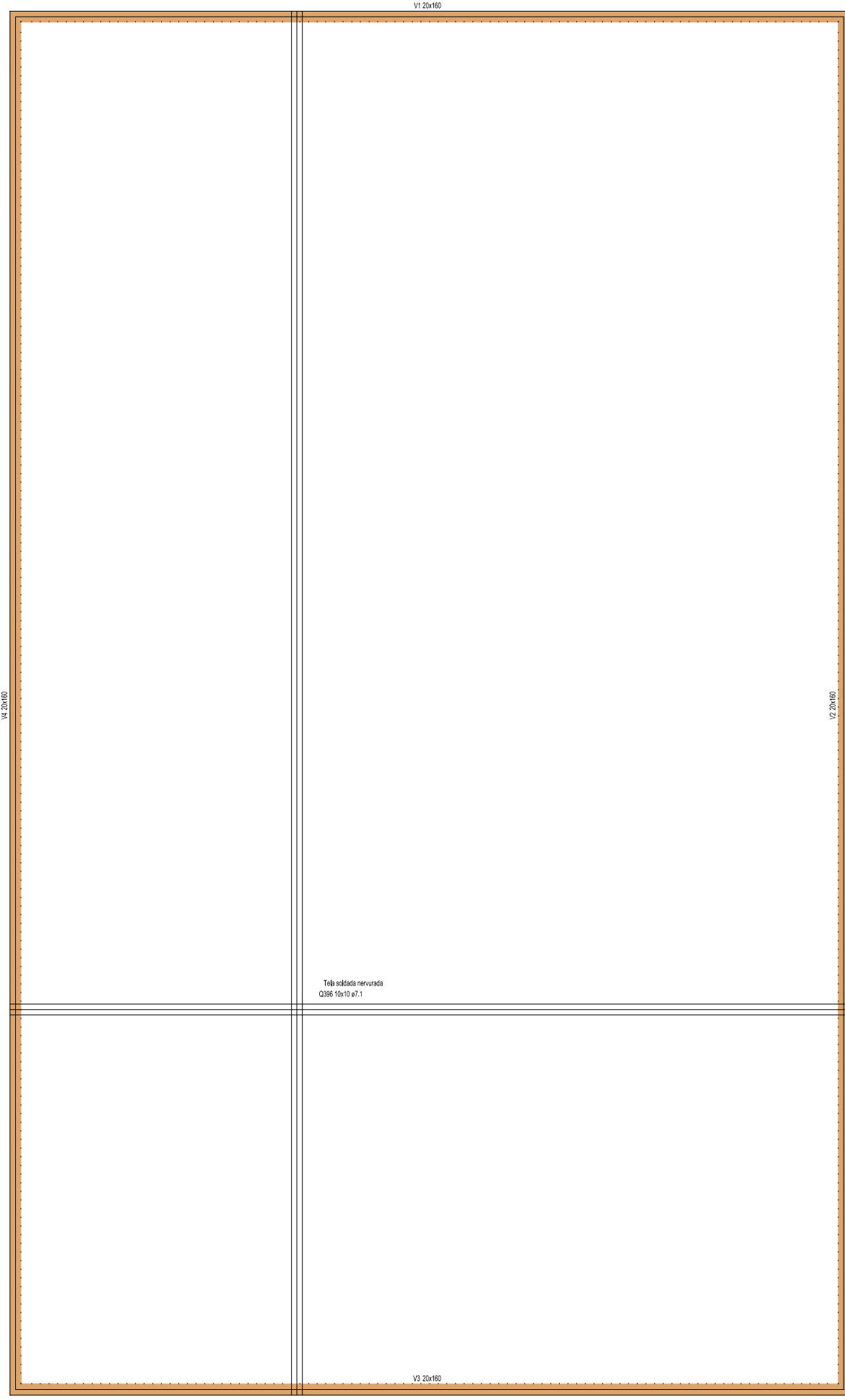
Lajes						
Nome	Tipo	Alura (cm)	Cotas Elevação (cm)	Nível (cm)	Peso próprio (kg/m²)	Adicional
L1	Laiaja	20	-140	-140	500	155
						300
						-

Características dos materiais		
Elemento	Gr (kg/cm²)	Gr (kg/cm²)
Vigas	300	28334
Reforço	200	24150

Legenda das vigas e paredes	
	Viga-chefe ou parede



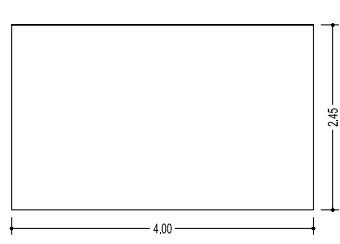
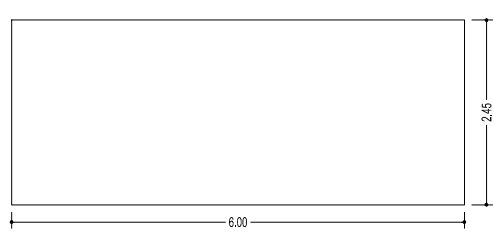
Disposição telas com transpasse representado  
escala 1:100



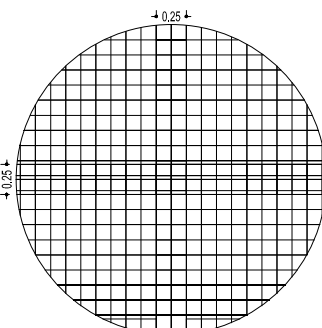
Armaduras inferiores  
escala 1:100

CBS 15x15x0.3

30

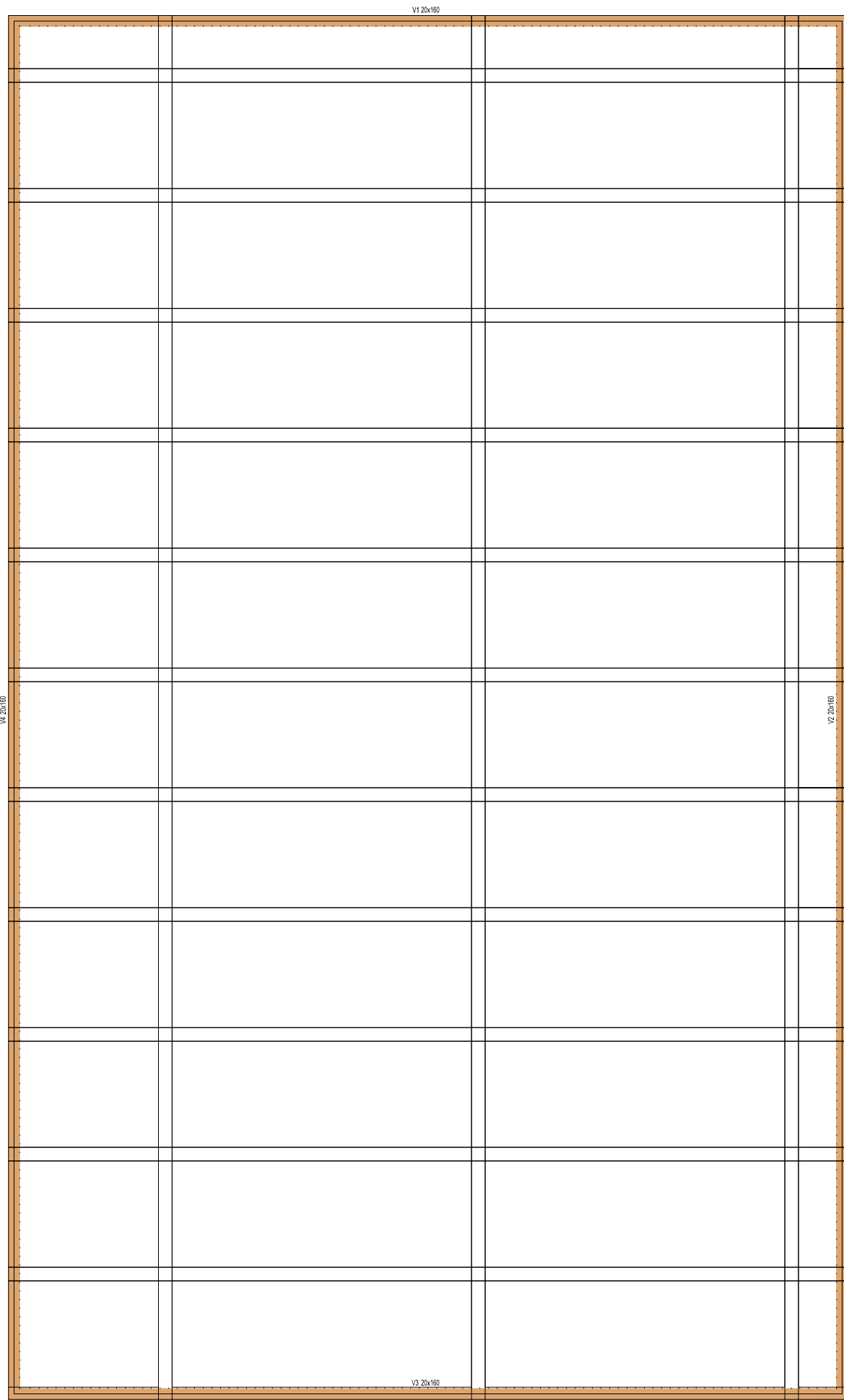
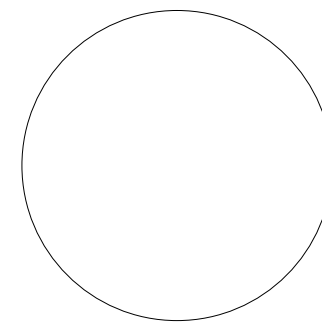


escala 1:100

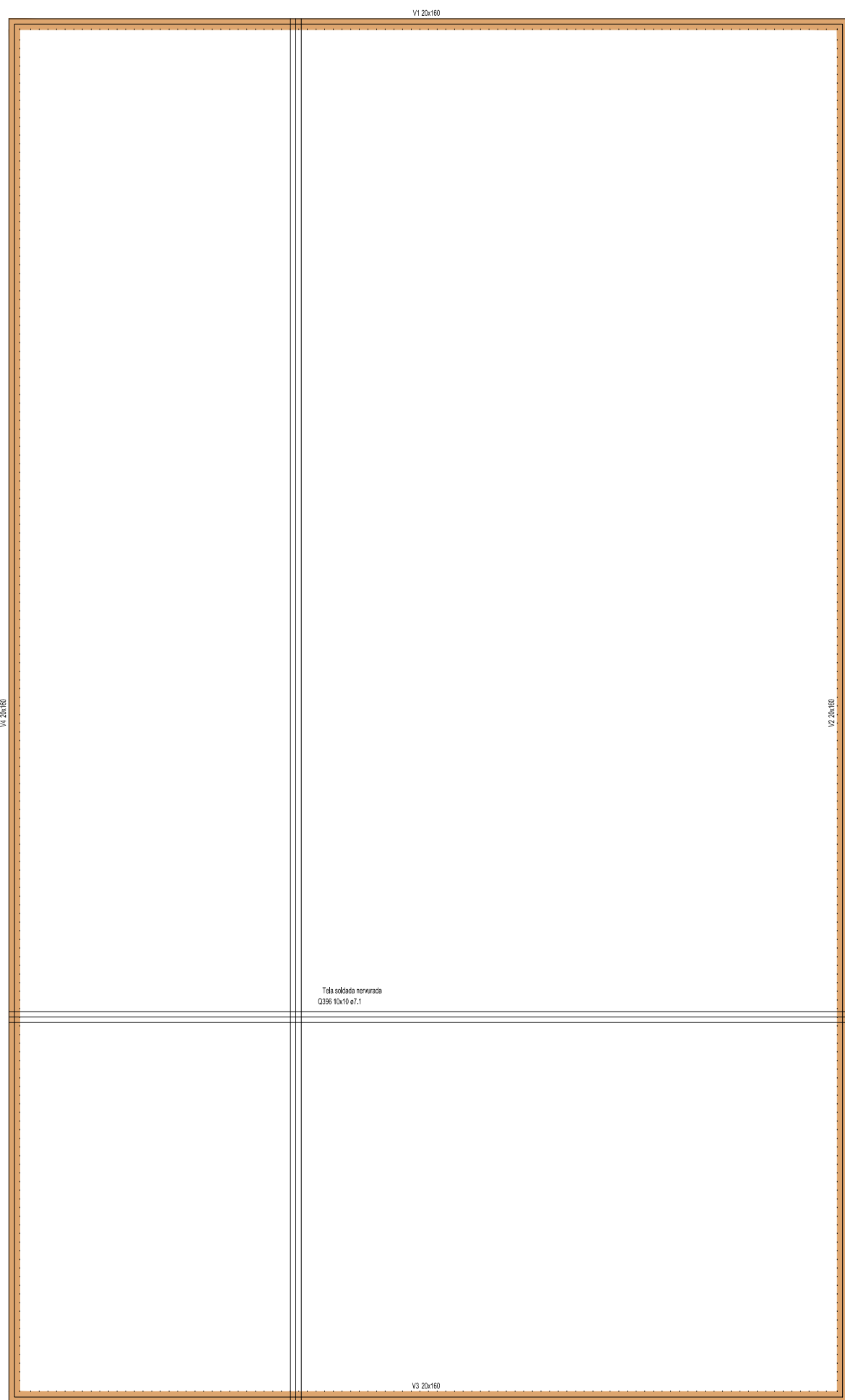


Transpasse

escala 1:50

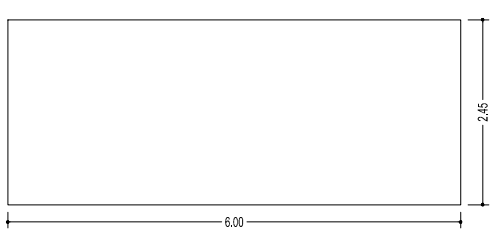


Disposição telas com transpasse representado  
escala 1:100

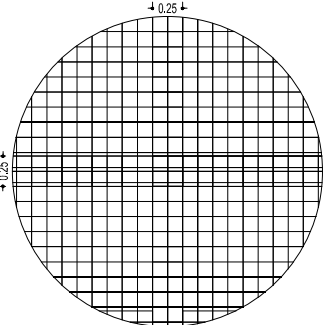


Armaduras superiores  
escala 1:100

CBS 15x15x0.3	33
Área de concreto (Lajes)	37.5 m²
Área de concreto (Paredes)	12.9 m²

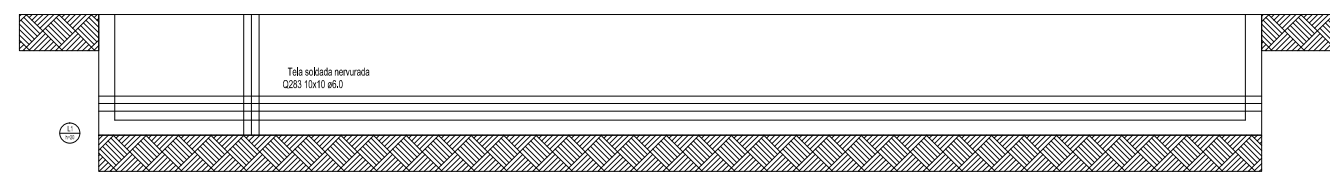
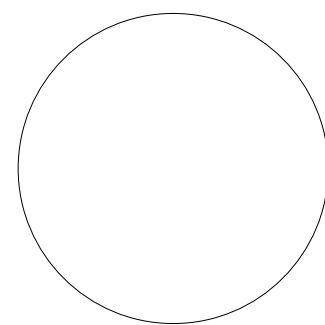


escala 1:100

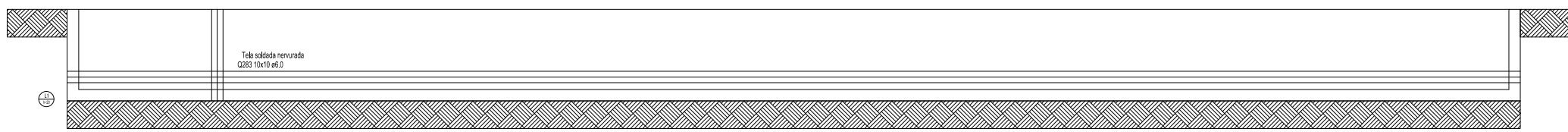


Transpasse

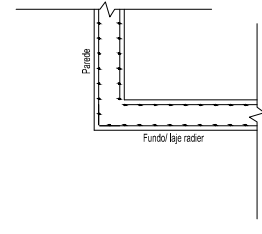
escala 1:50



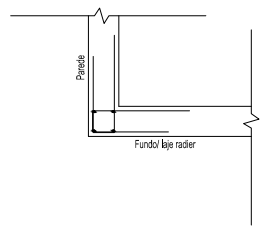
Corte a - a Piscina Semiolímpica  
escala 1:100



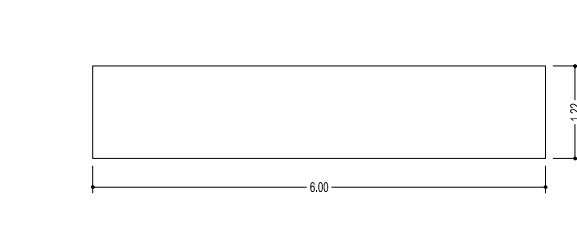
Corte b - b Piscina Semiolímpica  
escala 1:100



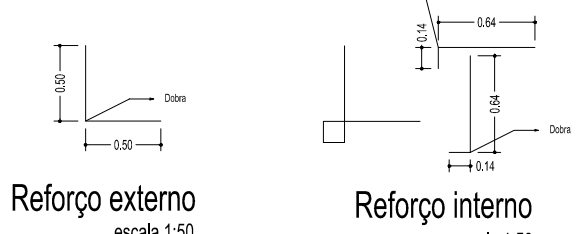
Armaduras em telas soldadas  
escala 1:50



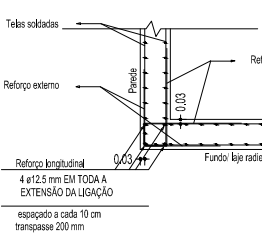
Reforço em vergalhões  
escala 1:50



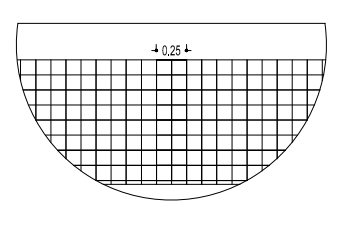
Reforço externo  
escala 1:50



Reforço interno  
escala 1:50

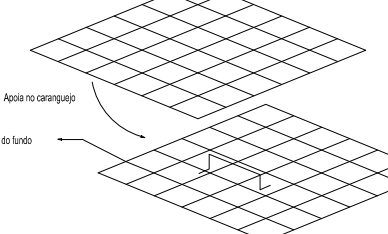


escala 1:50

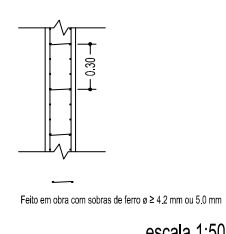


Transpasse

escala 1:50



escala 1:25



escala 1:50

DESENHO: MATEUS SOTERO

CLIENTE:

Serviço Social do Comércio

Serviço Social do Comércio

IDENTIFICAÇÃO DO PROJETO: PLANTA DE FORMAS E LOCAÇÃO DAS TELAS ARMADAS DAS PISCINAS

INDICADA

01.FUN.2018.10

Nº DA PRANCHA:

EST-21/22

ESTE PROJETO NÃO PODERÁ SER ALTERADO SEM O CONSENTO DO AUTOR.